


LAVISTA
RAY

RAY



LAVISTA
DEVELOPMENTS



LA VISTA DEVELOPMENTS

28
PROJECTS

16
DELIVERD
ON TIME

12
UNDER
DEVELOPMENT



ARCHITECTS, BUILDERS & DEVELOPERS

Established in 1991, LA VISTA Developments prides itself on having created a new standard in resort and residential living through its outstanding record of accomplishments. With an in-house design office that includes an expert team of architects and landscape designers, LA VISTA Developments' holistic approach to building new communities encompasses all the processes; from vision to design, construction, finishing and maintenance.

We have amassed a large client-base whose belief in our expertise and in the strong investments made with a property purchase from LA VISTA Developments continues to fuel our drive to grow even further.

We have successfully delivered on schedule several LA VISTA resort communities in Ain Sokhna, and the North Coast, with more projects currently being developed. We have also successfully delivered on schedule EL PATIO residential communities in Shorouk City and New Cairo, as well as in 6th of October City.

You can be assured that we are constantly working on bringing new ideas to life in developing communities that surpass the expectations we have previously set. We work hard to provide exclusive communities of like-minded residents.

MISSION

Our primary mission is to provide clients with a resort or residential unit that is a source of inspiration, and a sanctuary. We also strive to empower our staff employees, and make it our goal to elevate the real estate market in Egypt regionally and worldwide.

The bedrock of our work at LA VISTA Developments is a set of fundamental principles encrypted in our company DNA: dedication to our clients, commitment to our short and long term business plan, expert in-house teams that see the projects from start to finish and beyond, and consistency in meeting high standards.

VISION

We envision LA VISTA Developments maintaining its' strong position as the market leader in fully integrated resort and residential communities by consistently providing the highest quality homes, services, finishing, landscaping, and architecture, with an unparalleled return-on-investment.

LA VISTA RESORTS



Gracing the pristine shores of the rich Red Sea and the vibrant Mediterranean are several LA VISTA projects that fit perfectly on the soft sandy beaches of our two great coasts. Lying on the topaz waters of the Red Sea are a number of LA VISTA resort communities in Ain Sokhna all harmoniously blending with the natural environment, and boasting LA VISTA's signature rich landscaping, intelligently designed to offer vast green views and tranquility.

While on the azure waters of the North Coast sit several other LA VISTA resort communities offering everything you've come to expect from our developments. A signature design consistent in all LA VISTA resort communities creates a sense of cohesion and solidarity among all LA VISTA residents... the subtle earth tones and vast, lush greenery make for a holiday residence to be enjoyed by generations of your family, unmatched anywhere else.

In a constant state of evolution to meet unique client needs and desires, LA VISTA has taken into account customer suggestions in the ongoing development of its resorts.

Escape the city life and retreat to any of our LA VISTA resorts where land and sea come together to bring the best that nature has to offer. Your dream get-away is closer than you think. In any of our LA VISTA resorts is your home by the sea.

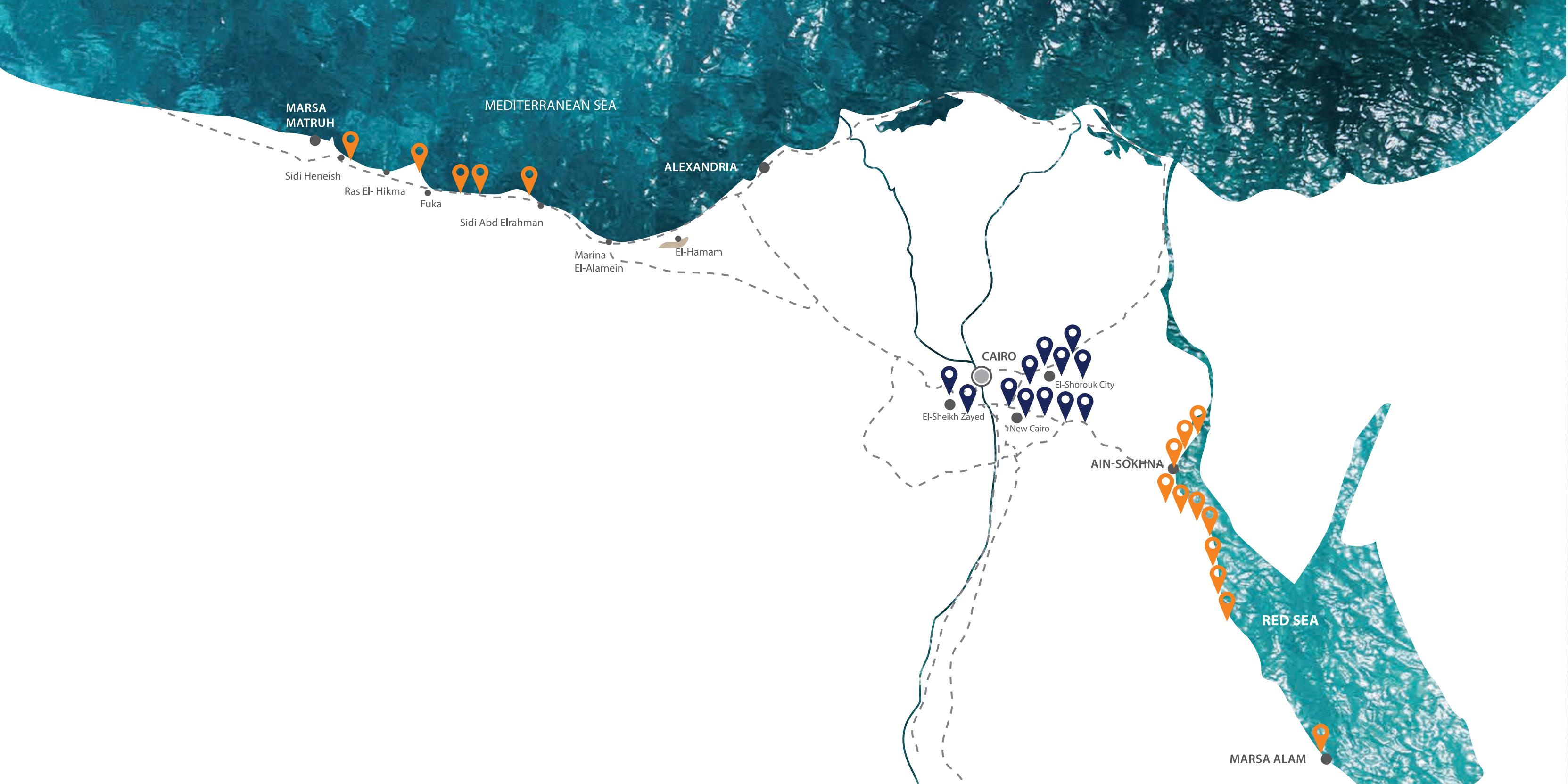
EL PATIO RESIDENTIAL COMPOUNDS



Known for its' signature communities, LA VISTA Developments has mastered residential real estate with several leading projects in Cairo. After having achieved ground breaking success in its resort development along the Red Sea, LA VISTA Developments then moved on to establish EL PATIO residential communities.

LA VISTA Developments offers EL PATIO residential communities that cater to exclusivity, privacy, and a luxury. All EL PATIO communities provide ideal living conditions within beautifully designed homes, vast green landscaping, a community of likeminded residents, and most importantly, the safety and security provided in exclusive, intelligently designed spaces.

EL PATIO compounds offer apartments, stand-alone villas as well as variations on the villa such as twin homes, townhouses and quadro units. The introduction of apartments in our residential compounds caters to customer requests, and so in compliance with our customer needs, apartments have been included in our residential units. With compounds in New Cairo, El Shorouk and 6 October, the philosophy of comfort and luxury and the life-style of exclusivity that EL PATIO embodies are available to residents in various areas of Greater Cairo.



MARSА MATRUH

MEDITERRANEAN SEA

ALEXANDRIA

Sidi Heneish

Ras El- Hikma

Fuka

Sidi Abd Elrahman

Marina El-Alamein

El-Hamam

CAIRO

El-Sheikh Zayed

New Cairo

El-Shorouk City

AIN-SOKHNA

RED SEA

MARSА ALAM

a

A perfect year-round beach destination, Ain Sokhna is an hour's drive from Cairo, making it accessible on a weekly basis for those looking for a dose of sun, sand, and sea every weekend, winter and summer. Perfectly situated along the pristine waters of the historic Red Sea, calm and inviting, all year-round. With several LA VISTA community resorts situated along the Sokhna-Zaafarana road, each offering a unique location, services and facilities, making LA VISTA the ideal destination for an Ain Sokhna holiday.



A Strong ALLIANCE

LA VISTA RAY signals a monumental milestone in the history of LA VISTA Developments as it marks the 10th addition to the LA VISTA Ain Sokhna family. It represents a track record of proven success, and an upward trajectory of growth. LA VISTA RAY is a partnered collaboration between two power house industry players, two of the most prominent names in real estate and tourism: LA VISTA Developments and Travco Group. Travco Group is a travel, tourism and hospitality empire with over 3 decades of excellence in operation across Egypt and the Middle East.







Laid out on 185,000 m2 of land, LA VISTA RAY offers units of diverse sizes and designs to suit different needs.

Unit types vary from chalets to villas, ranging in size from 110m2 to 210m2.

The majority of LA VISTA RAY is covered in lush and abundant landscaping, intelligently designed to convey a Far East feel, with a large number of water features and pools, residents will always be only a few steps away from a pool anywhere they are in LA VISTA RAY.

An 18% built-up area means that LA VISTA RAY enjoys vast landscaping boasting rich Far Eastern inspired greenery and flora, and fresh spaces to invigorate and inspire.

Offering year-round sunshine, continuous cool breezes and pristine azure beaches.



la vista
RAY



LOCATION

LA VISTA RAY is an hour and a half's drive from New Cairo, around 170 Km. Located 10 Km before the Zaaferana toll station, 15 Km from El Galala exit to the Sokhna-Zaafarana road, before Mountain View Sokhna 1, and 3 Km after LA VISTA 4.

The sea is continuously visible as you drive along the Sokhna-Zaafaran road. This area enjoys cool winds all-year round, and vast mountain views making LA VISTA RAY a true summer destination as well as a winter beach getaway.

MASTER PLAN







A Far East **EXPERIENCE**

LA VISTA RAY is the first Ain Sokhna addition to be designed in striking and elegant modern architecture. LA VISTA RAY will bring the Far East to you with an Asian retreat feel by introducing the Thai Promenade, where you will experience the true serenity of the islands of the Far East right here in Ain Sokhna.



LA VISTA RAY is divided into four main enclaves, each one with a special feature serving all residents. These include, a large Jacuzzi & Spa to while away the lazy hours, a gourmet restaurant & bar for an authentic Asia vibe, a Yoga & Pilates center where residents will benefit from expert instructors and a lavish menu of services, and a gym.

Surrounded by waterfronts, the Thai Promenade is accessible from anywhere in LA VISTA RAY.

BEACH AREA



RESTAURANT & BAR



YOGA & PILATES



JACUZZI & SPA



GYM



The Thai
PROMENADE



Special FEATURES

It is no coincidence that LA VISTA RAY is situated in this spot, the sea serves as an excellent diving area, with bountiful marine life, there is lots to explore under the sea. This location enjoys winds that are optimal for kite-surfing or kite-flying, making sure residents who love to stay active have lots to do over their holiday breaks.

A spacious and inviting Jacuzzi will serve as an optimum relaxation spot for all residents. The Jacuzzi will be operating and covered during the winter months.





Special FEATURES

To stay active, residents can also partake in a tennis match in the state-of-the-art tennis courts, or play a friendly game of football in the football field. A multi-purpose court caters to various sports like basketball and volleyball, among others, so different sports preferences will all be met. A lively children's area provides swings, slides, monkey bars and more activities and entertainment to keep the little ones busy and active over the holidays!



Amenities

a

As is customary in all LA VISTA communities, a supermarket, a clinic, year-round security, resort-wide CCTV surveillance, and year-round maintenance are also available at LA VISTA RAY, ensuring a safe, fully-serviced community.





**LET THE WARM
RAYS OF LIGHT
INTO YOUR LIFE**

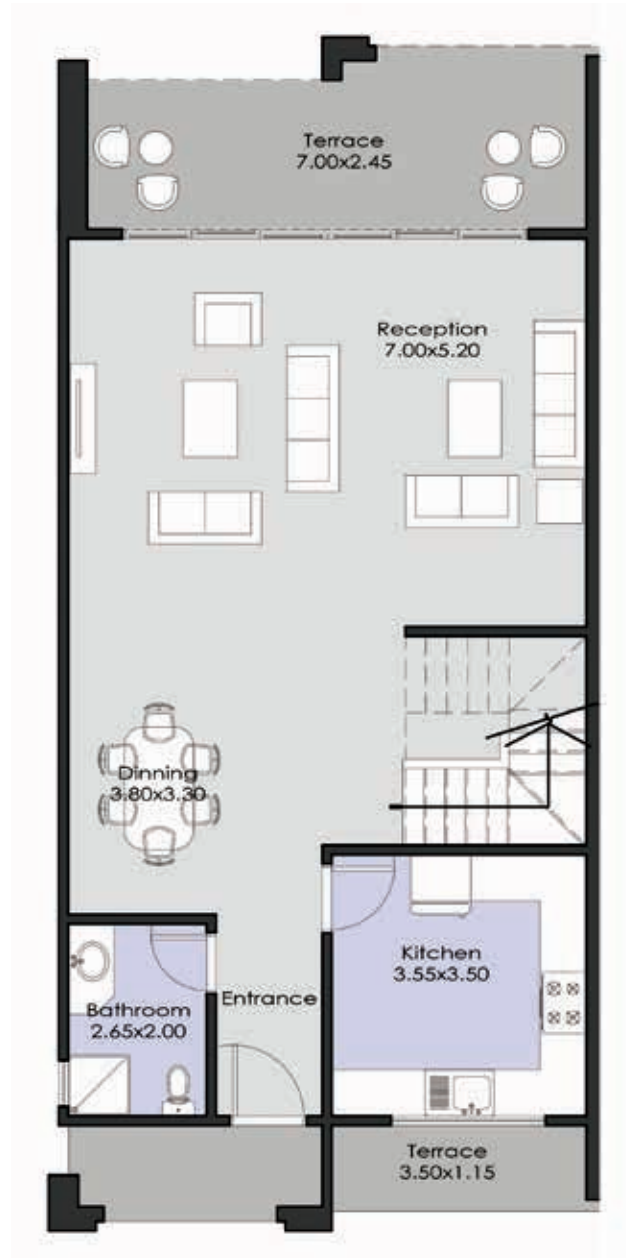


FLOOR
PLANS

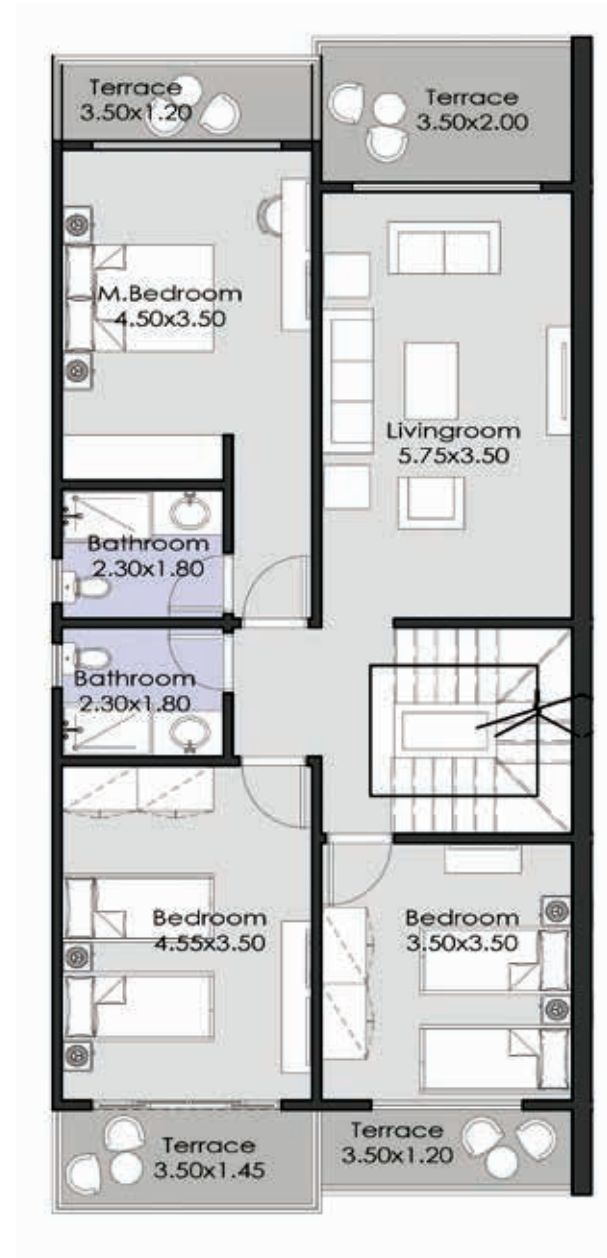


VILLA
210 m²

GROUND FLOOR



FIRST FLOOR

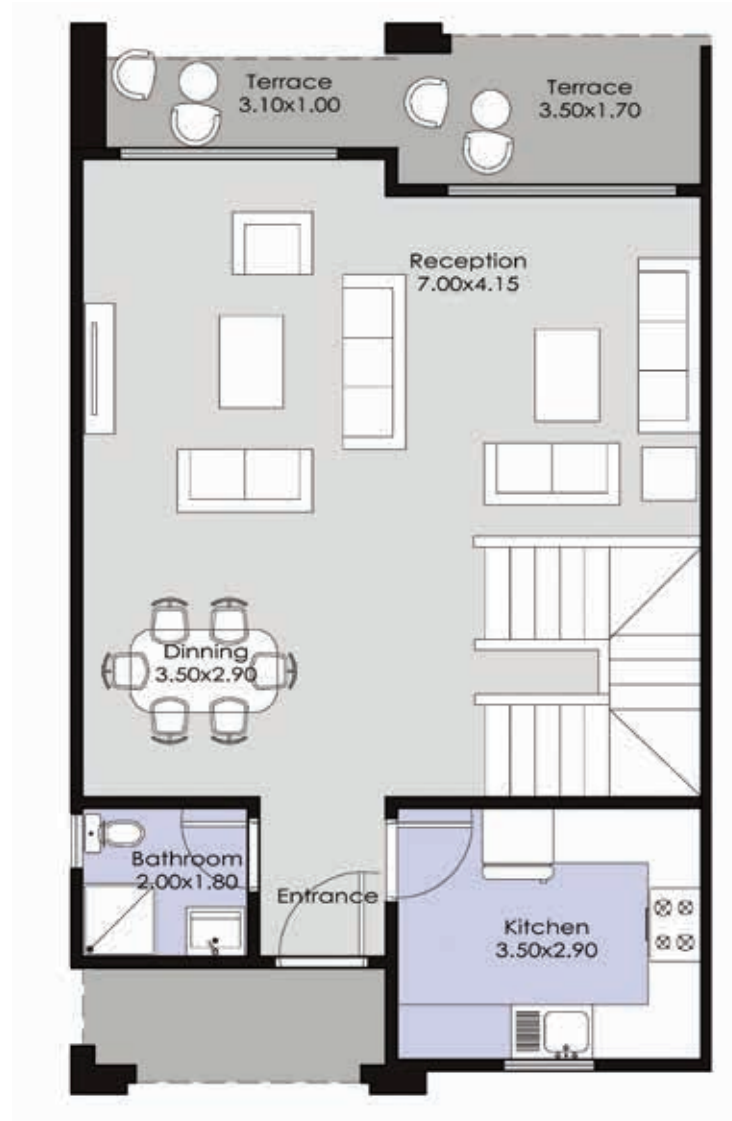


ROOF

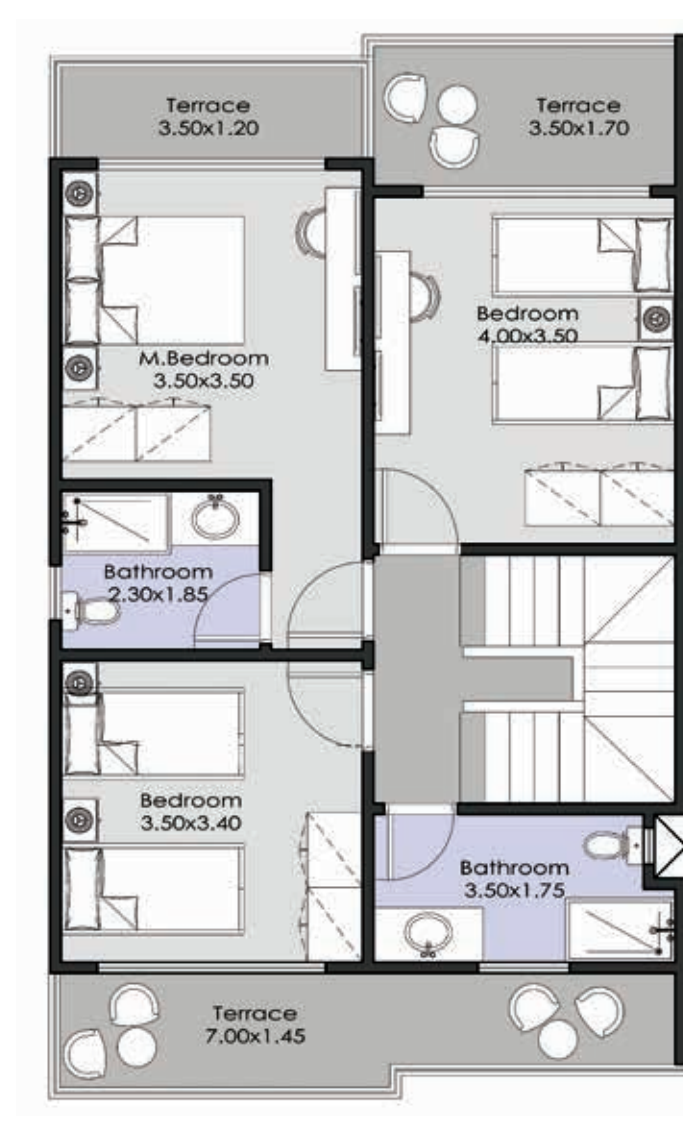


VILLA
160 m²

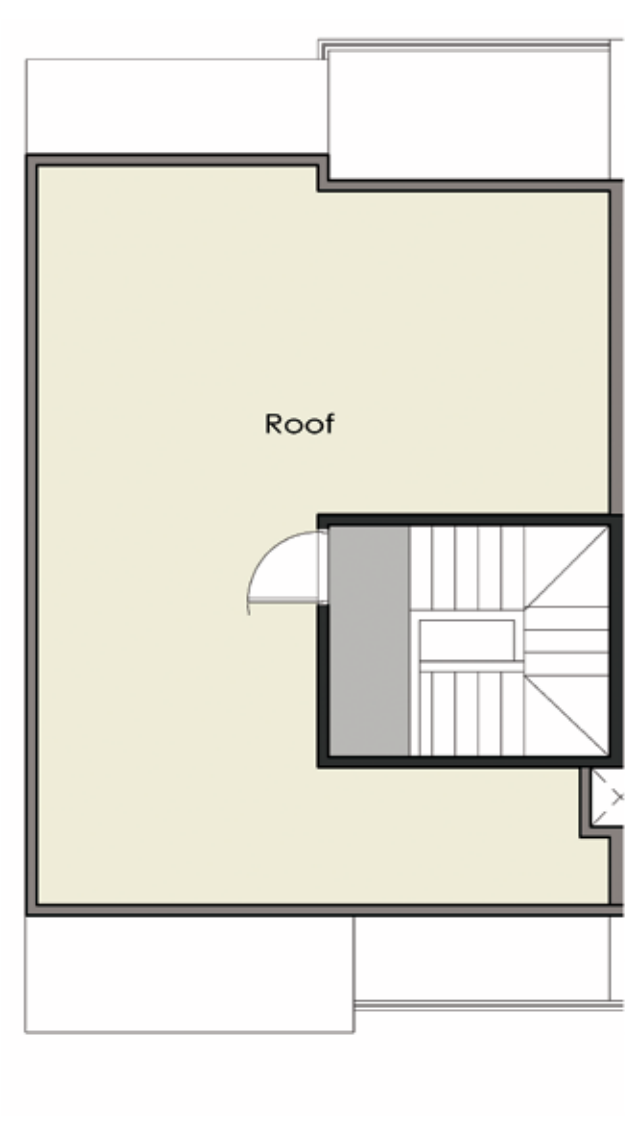
GROUND FLOOR




FIRST FLOOR



SECOND FLOOR



Chalets



FLOOR
PLANS

Chalet
140 m²

GROUND FLOOR



Chalet
145 m²

GROUND FLOOR



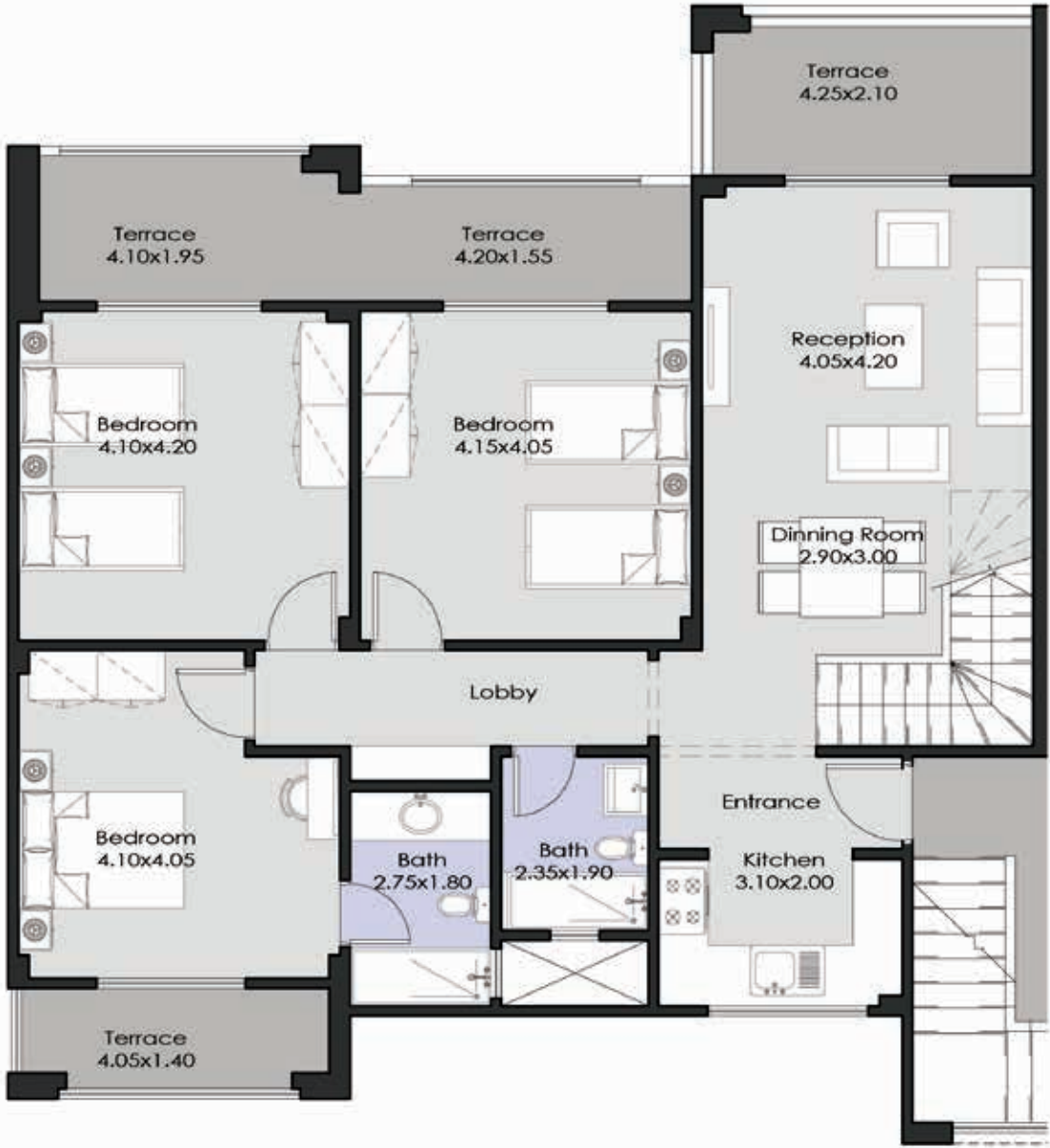
Chalet
145 m²

FIRST FLOOR

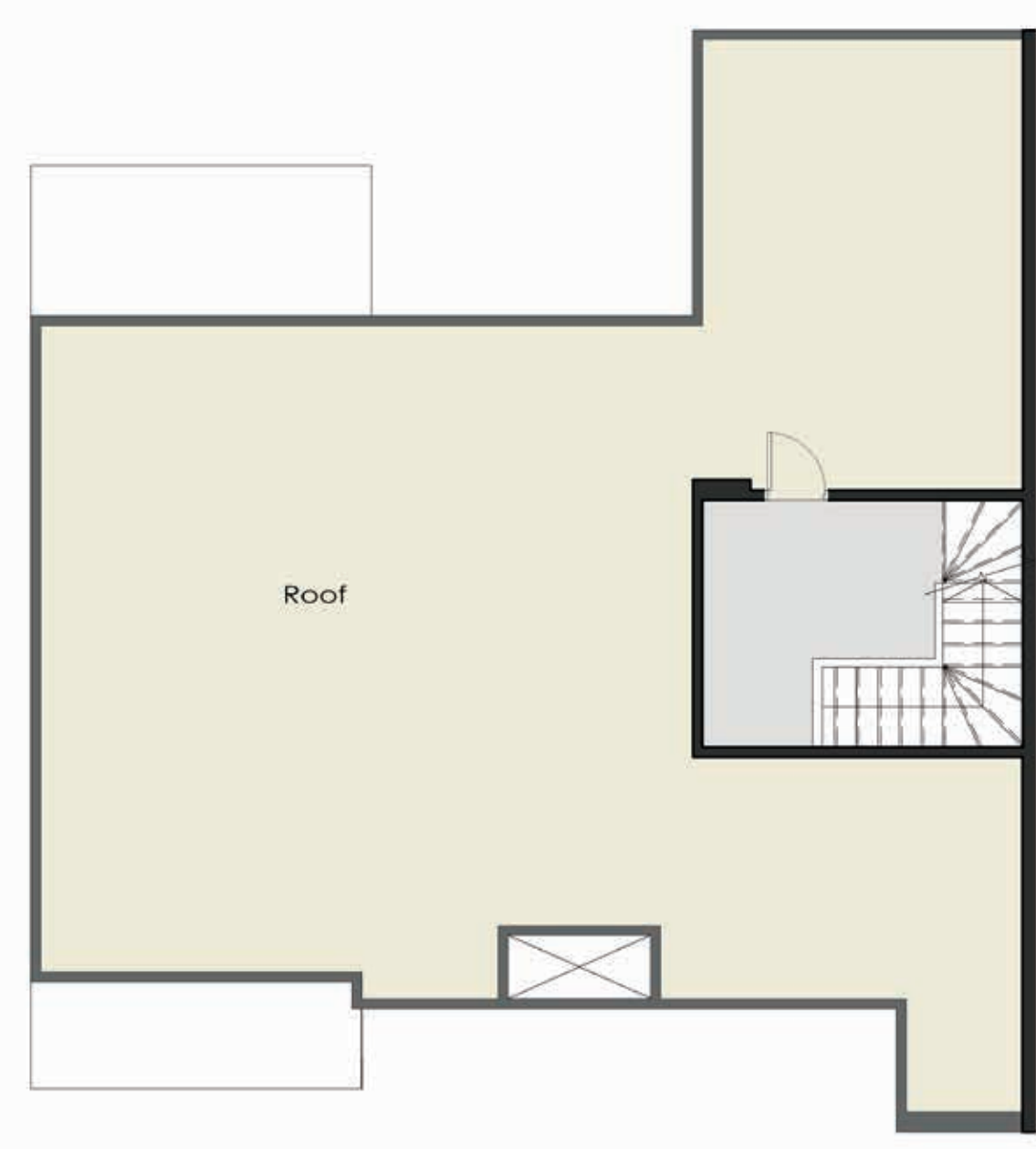


Chalet
155 m²

SECOND FLOOR + ROOF



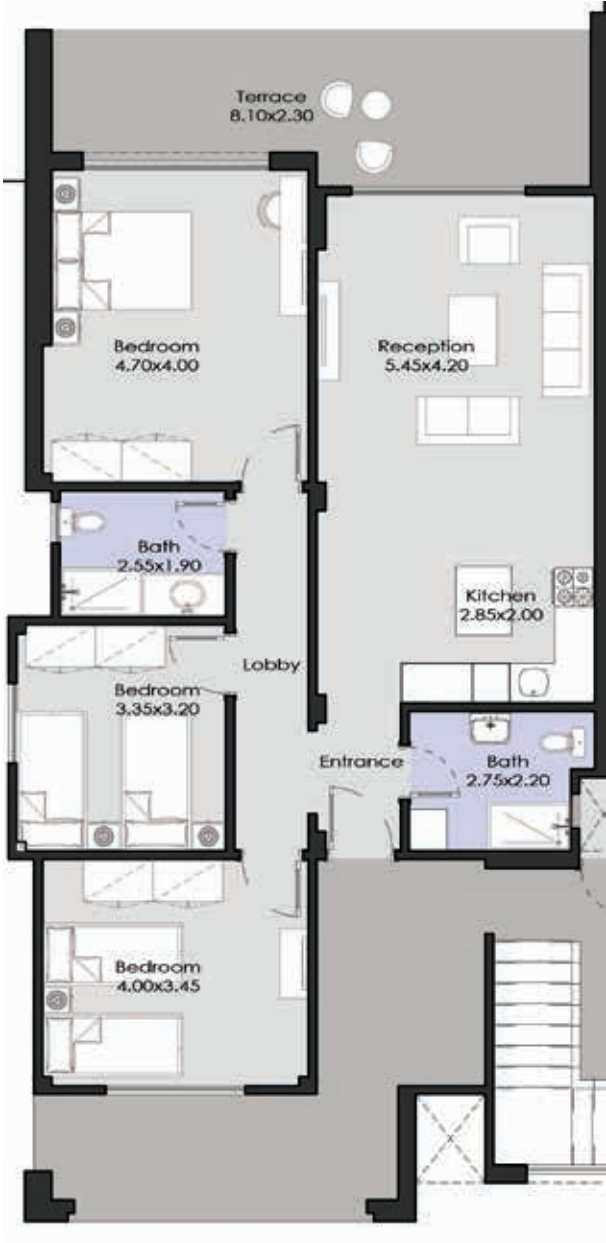
Disclaimer: Diagrams are for illustrative purposes only and subject to change.



Disclaimer: Diagrams are for illustrative purposes only and subject to change.

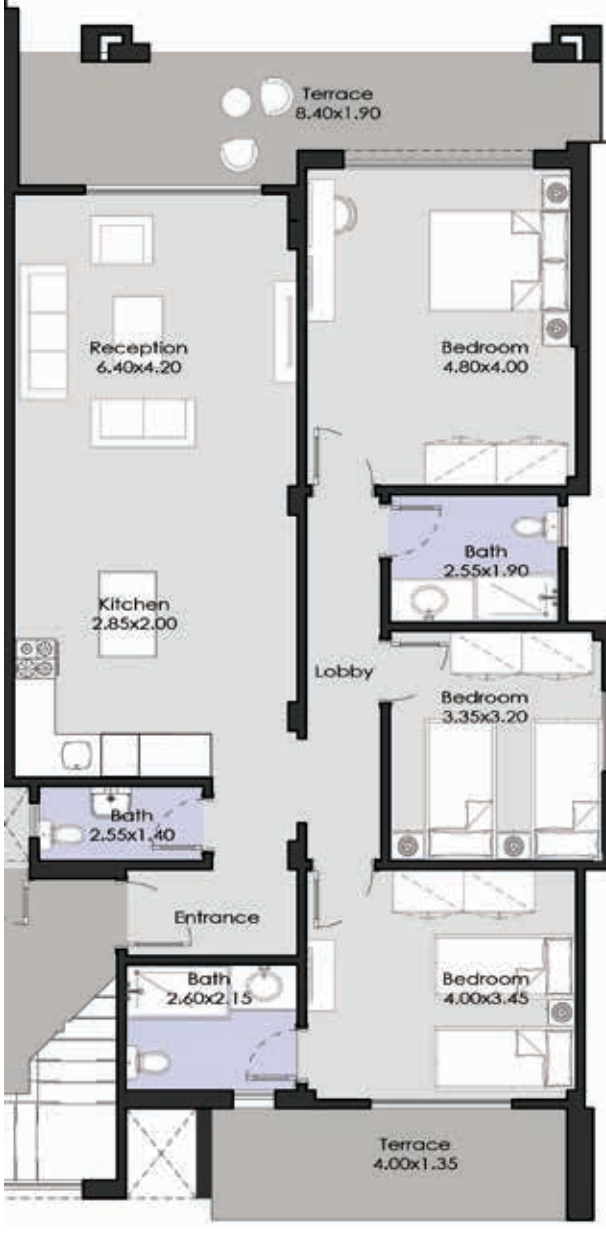
Chalet
125 m²

GROUND FLOOR



Chalet
130 m²

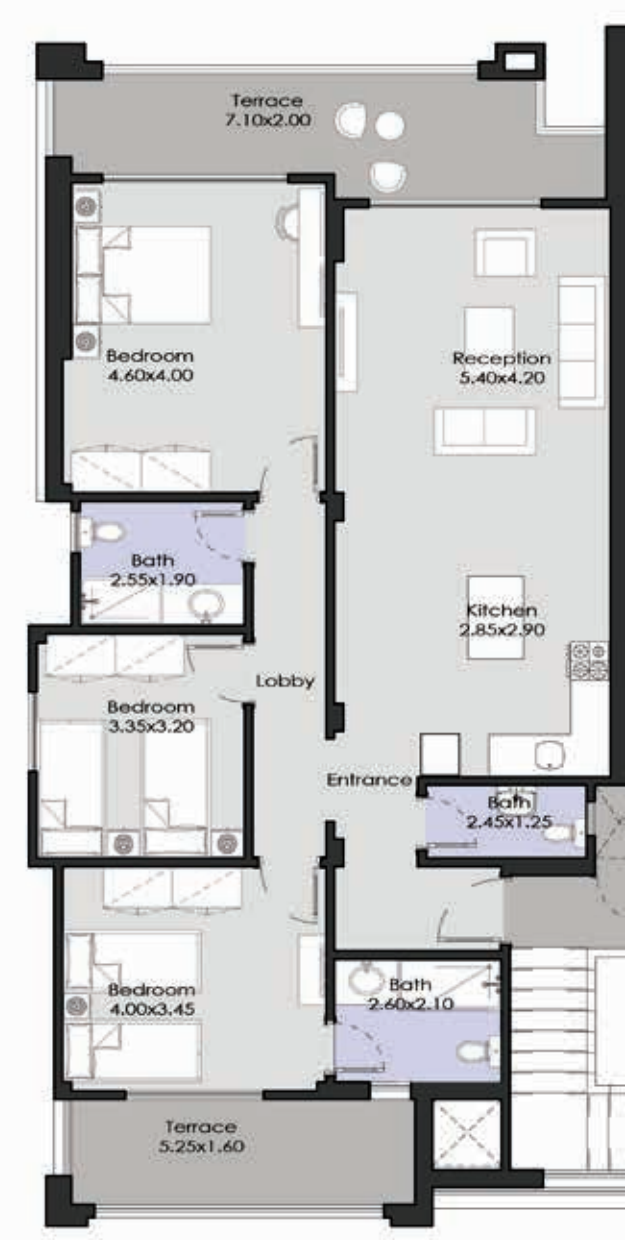
GROUND FLOOR



Chalet

130 m²

FIRST FLOOR



Chalet

140 m²

SECOND FLOOR + ROOF



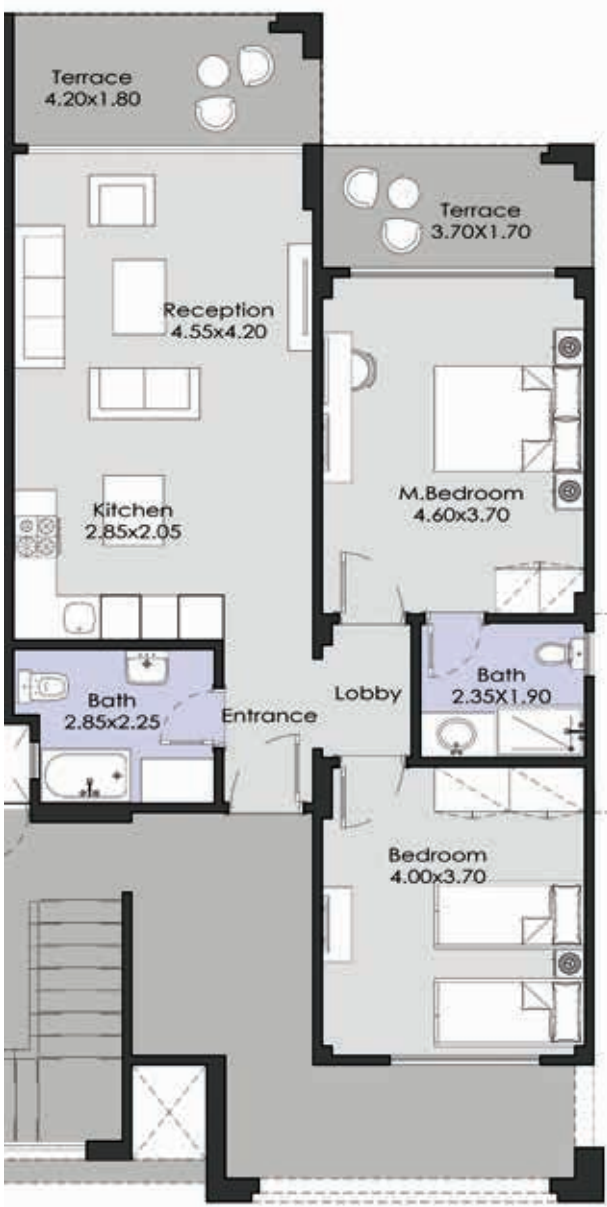
Chalet
115 m²

GROUND FLOOR



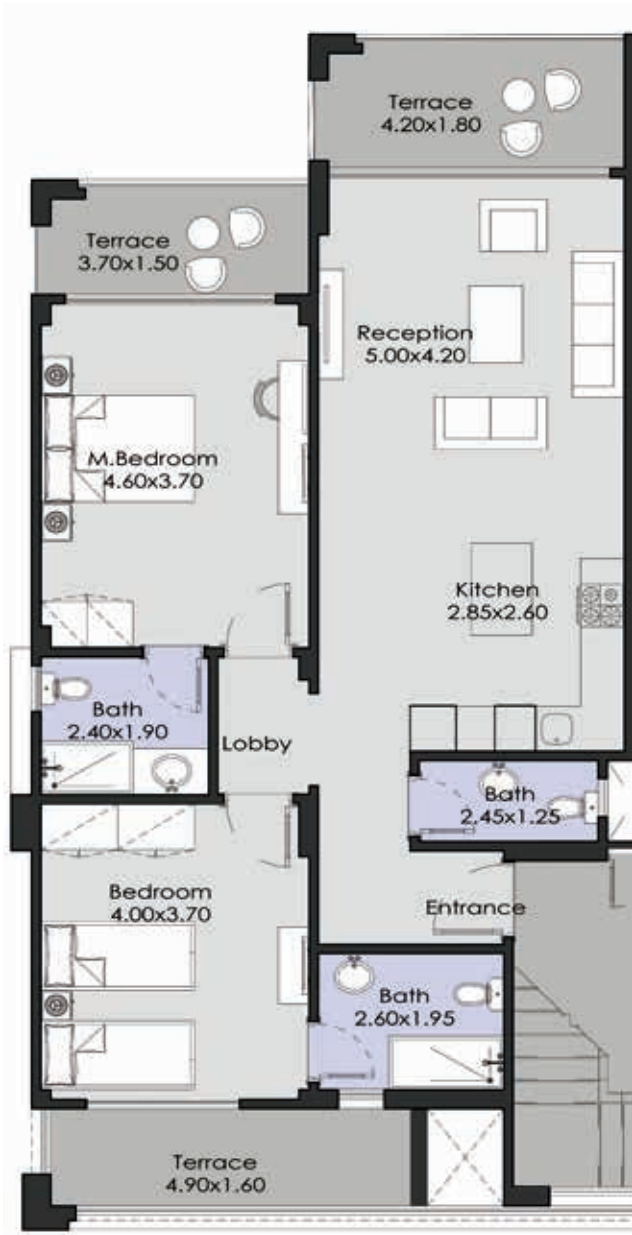
Chalet
110 m²

GROUND FLOOR



Chalet
115 m²

FIRST FLOOR



Chalet
125 m²

SECOND FLOOR + ROOF

